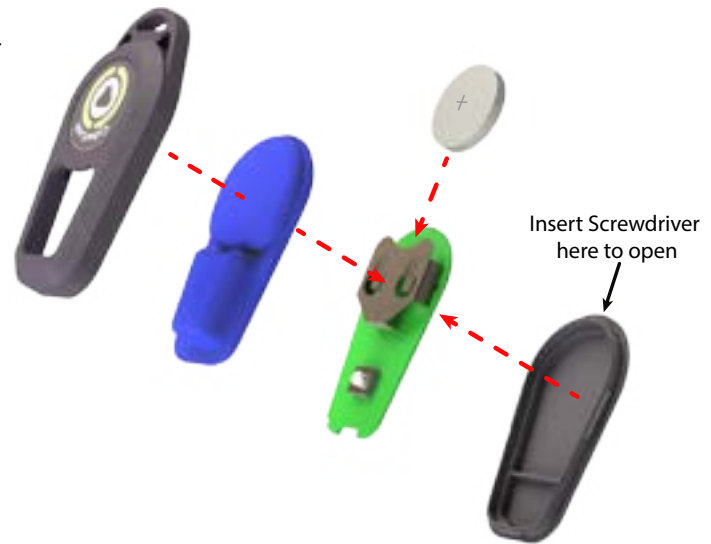


# CyberLock Key Fob Battery Replacement

---

- 1) Use a flathead screwdriver to pry the bottom case off the Key Fob.
- 2) Separate the case halves and set the blue button cover aside.
- 3) Remove the CR2032 battery from the circuit board by pushing it up through the bottom of the battery holder. Be careful not to damage the circuit board.
- 4) Replace the battery with positive face oriented upward. Push the battery in until fully seated.
- 5) Check functionality by pressing the button. LEDs will light if the battery is connected.
- 6) Set the circuit board into the bottom case, button side up.
- 7) Press the blue button cover down over the assembly. Make sure the lip is fully pressed into the bottom case to ensure a water-resistive seal.
- 8) Snap the top case into place. Case halves should meet flush with no gaps.



MN-FLK-05

GCO4234

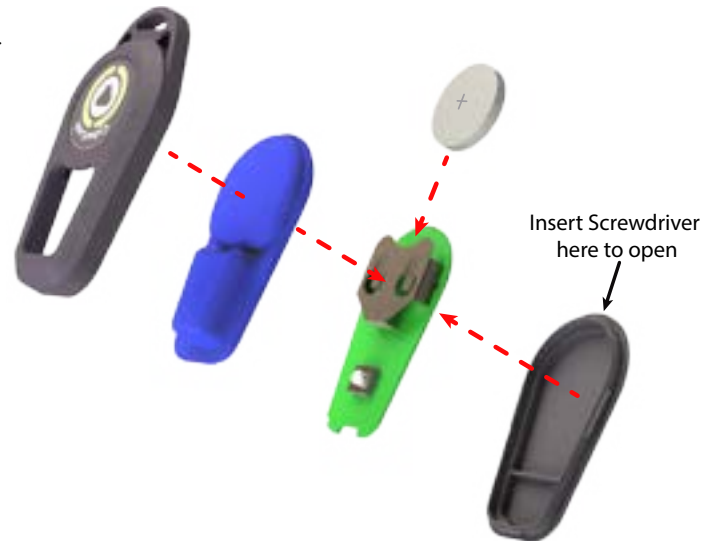
**CyberLock® FlashLock®**

[www.MyFlashLock.com](http://www.MyFlashLock.com) ♦ [support@cyberlock.com](mailto:support@cyberlock.com)

# CyberLock Key Fob Battery Replacement

---

- 1) Use a flathead screwdriver to pry the bottom case off the Key Fob.
- 2) Separate the case halves and set the blue button cover aside.
- 3) Remove the CR2032 battery from the circuit board by pushing it up through the bottom of the battery holder. Be careful not to damage the circuit board.
- 4) Replace the battery with positive face oriented upward. Push the battery in until fully seated.
- 5) Check functionality by pressing the button. LEDs will light if the battery is connected.
- 6) Set the circuit board into the bottom case, button side up.
- 7) Press the blue button cover down over the assembly. Make sure the lip is fully pressed into the bottom case to ensure a water-resistive seal.
- 8) Snap the top case into place. Case halves should meet flush with no gaps.



MN-FLK-05

GCO4234

**CyberLock® FlashLock®**

[www.MyFlashLock.com](http://www.MyFlashLock.com) ♦ [support@cyberlock.com](mailto:support@cyberlock.com)